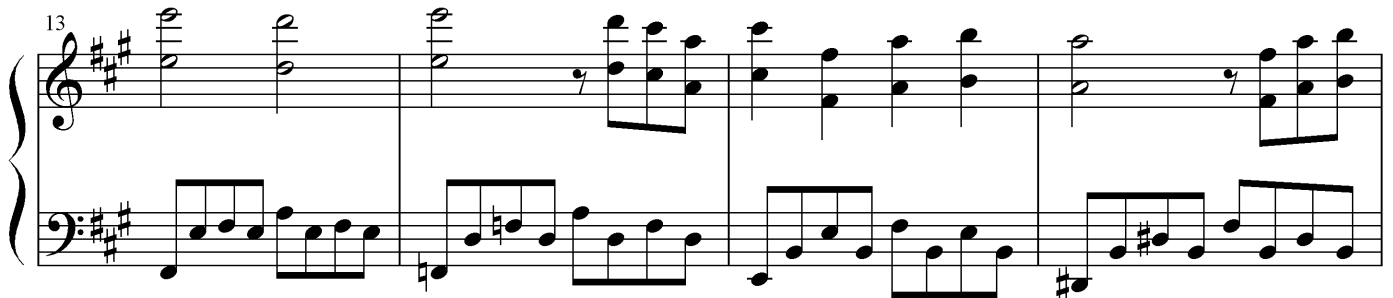
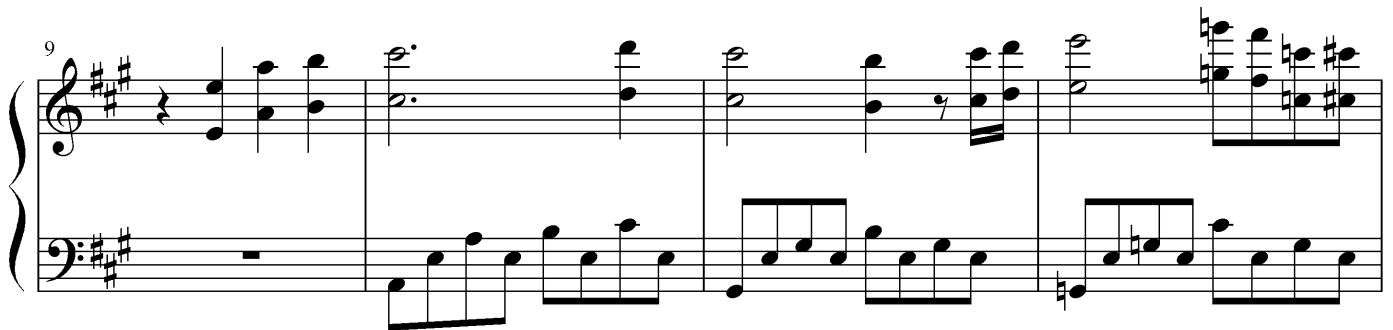
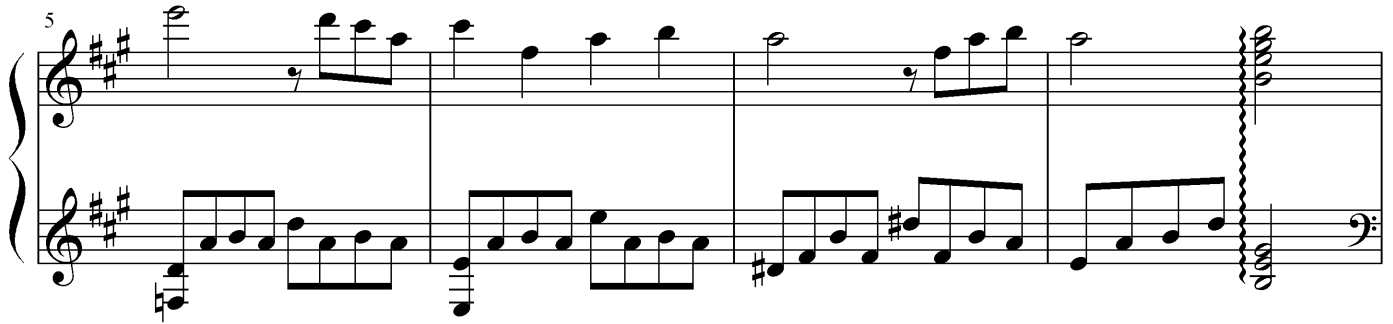
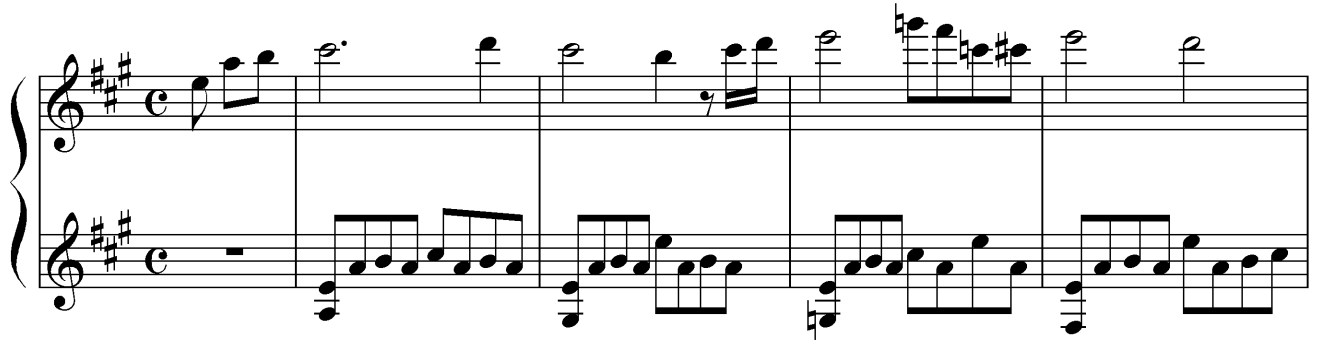
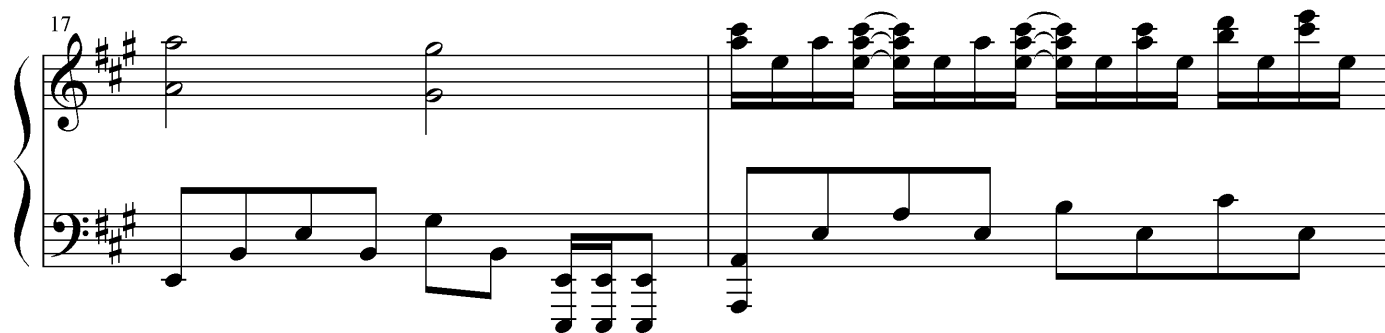


# 朝影

comp. KEY

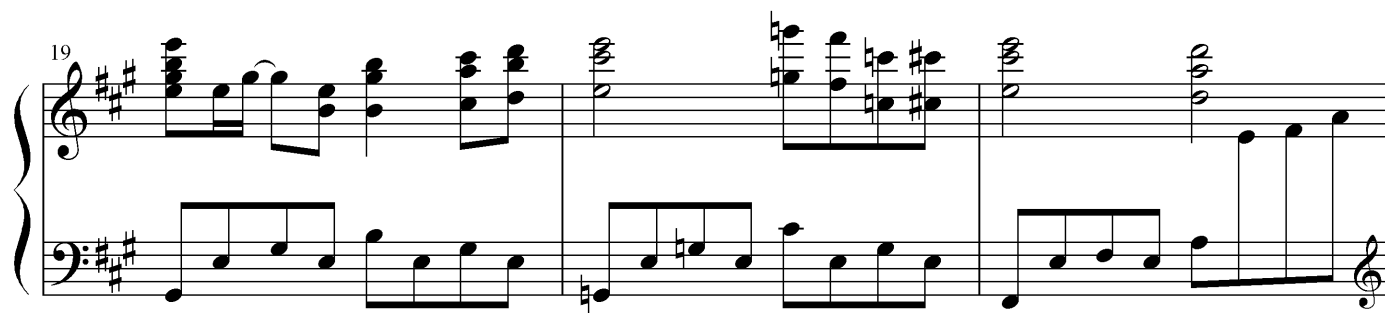


17



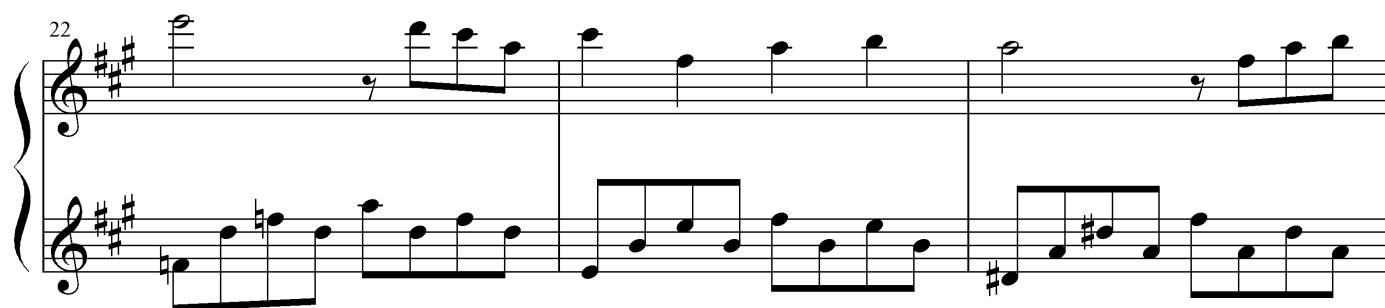
System 17: Treble and bass staves. Treble staff has a whole note chord (F#4, A#4) and a half note chord (F#4, A#4). Bass staff has a half note chord (F#2, A#2) and a half note chord (F#2, A#2).

19



System 19: Treble staff has a half note chord (F#4, A#4) and a half note chord (F#4, A#4). Bass staff has a half note chord (F#2, A#2) and a half note chord (F#2, A#2).

22



System 22: Treble staff has a half note chord (F#4, A#4) and a half note chord (F#4, A#4). Bass staff has a half note chord (F#2, A#2) and a half note chord (F#2, A#2).

25



System 25: Treble staff has a half note chord (F#4, A#4) and a half note chord (F#4, A#4). Bass staff has a half note chord (F#2, A#2) and a half note chord (F#2, A#2).

28



System 28: Treble staff has a half note chord (F#4, A#4) and a half note chord (F#4, A#4). Bass staff has a half note chord (F#2, A#2) and a half note chord (F#2, A#2).

31

System 1, measures 31-33. The key signature has two sharps (F# and C#). The right hand plays chords and moving lines, while the left hand plays a steady eighth-note accompaniment.

34

System 2, measures 34-36. The right hand features dense chordal textures, and the left hand continues the eighth-note accompaniment.

37

System 3, measures 37-39. The right hand has block chords, and the left hand continues the eighth-note accompaniment.

40

System 4, measures 40-42. The right hand has a whole rest in measure 40, followed by a melodic line in measures 41 and 42. The left hand continues the eighth-note accompaniment.

43

System 5, measures 43-45. The key signature changes to three sharps (F#, C#, and G#). The right hand has whole notes, and the left hand continues the eighth-note accompaniment.