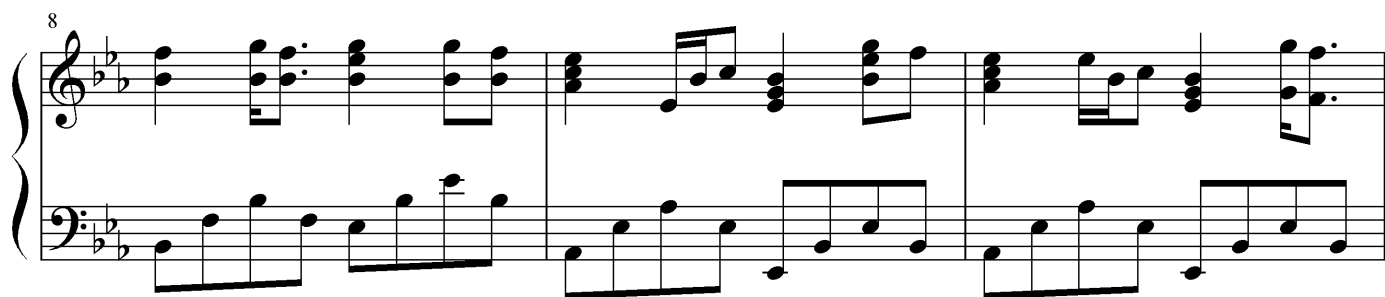
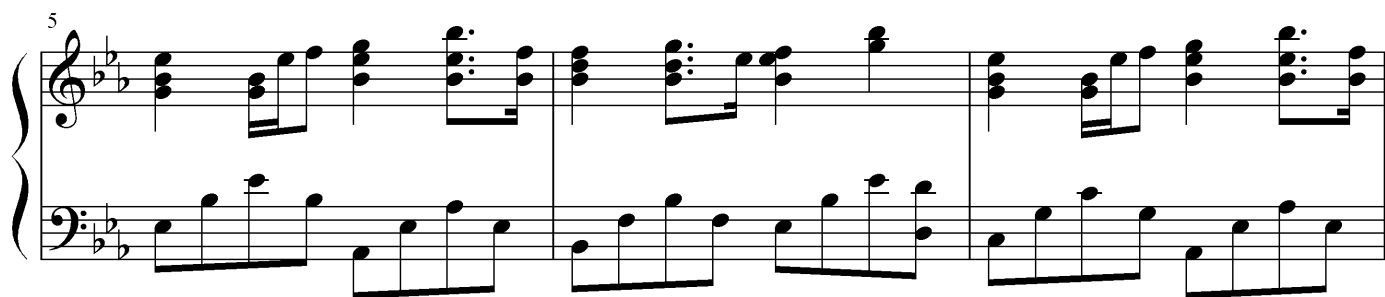
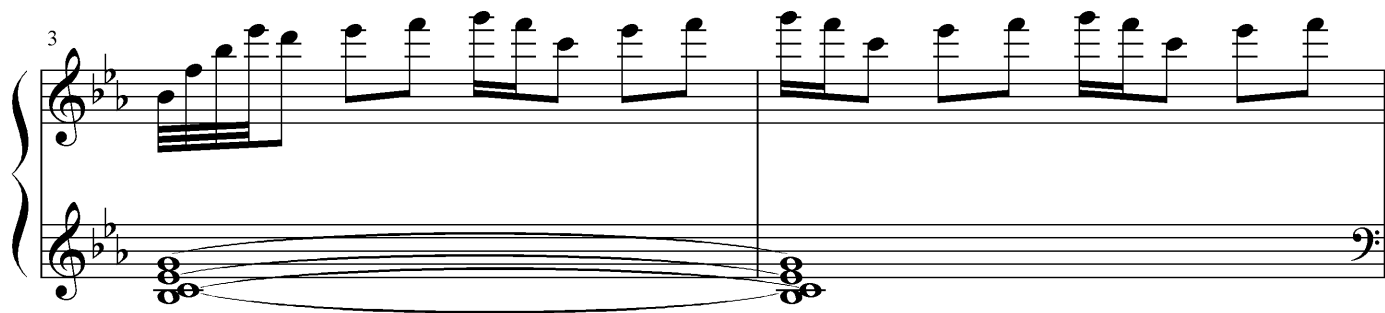
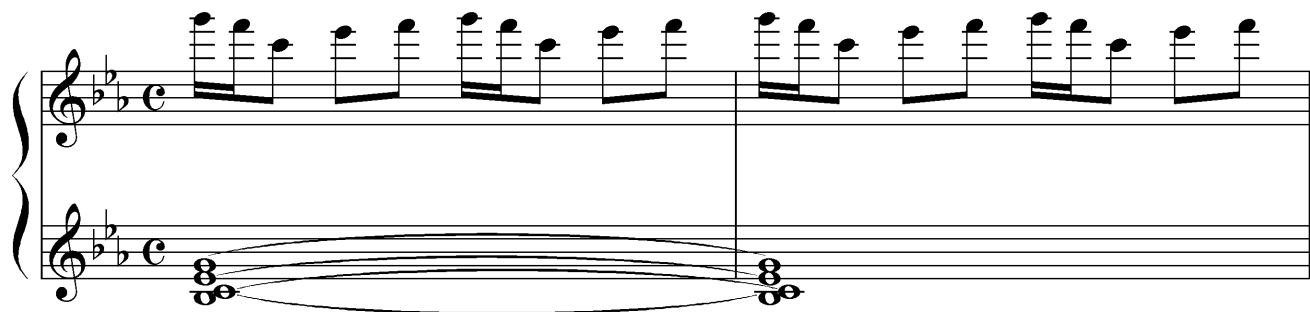


夏影 ver. 2

Key



11

Measures 11-13 of a musical score in B-flat major. Measure 11 features a treble staff with a whole note chord of B-flat, D-flat, and F, and a bass staff with a half note G and a half note F. Measure 12 has a treble staff with a whole note chord of B-flat, D-flat, and F, and a bass staff with a half note G and a half note F. Measure 13 has a treble staff with a whole note chord of B-flat, D-flat, and F, and a bass staff with a half note G and a half note F.

14

Measures 14-16 of a musical score in B-flat major. Measure 14 has a treble staff with a whole note chord of B-flat, D-flat, and F, and a bass staff with a half note G and a half note F. Measure 15 has a treble staff with a whole note chord of B-flat, D-flat, and F, and a bass staff with a half note G and a half note F. Measure 16 has a treble staff with a whole note chord of B-flat, D-flat, and F, and a bass staff with a half note G and a half note F.

17

Measures 17-19 of a musical score in B-flat major. Measure 17 has a treble staff with a whole note chord of B-flat, D-flat, and F, and a bass staff with a half note G and a half note F. Measure 18 has a treble staff with a whole note chord of B-flat, D-flat, and F, and a bass staff with a half note G and a half note F. Measure 19 has a treble staff with a whole note chord of B-flat, D-flat, and F, and a bass staff with a half note G and a half note F.

20

Measures 20-22 of a musical score in B-flat major. Measure 20 has a treble staff with a whole note chord of B-flat, D-flat, and F, and a bass staff with a half note G and a half note F. Measure 21 has a treble staff with a whole note chord of B-flat, D-flat, and F, and a bass staff with a half note G and a half note F. Measure 22 has a treble staff with a whole note chord of B-flat, D-flat, and F, and a bass staff with a half note G and a half note F.

23

Measures 23-25 of a musical score in B-flat major. Measure 23 has a treble staff with a whole note chord of B-flat, D-flat, and F, and a bass staff with a half note G and a half note F. Measure 24 has a treble staff with a whole note chord of B-flat, D-flat, and F, and a bass staff with a half note G and a half note F. Measure 25 has a treble staff with a whole note chord of B-flat, D-flat, and F, and a bass staff with a half note G and a half note F.

26

This system contains measures 26, 27, and 28. The treble clef staff features a continuous eighth-note melody in a minor key. The bass clef staff has a whole rest in measure 26, followed by a sustained octave chord (two G notes) in measures 27 and 28, indicated by a slur and repeat dots.

29

This system contains measures 29, 30, and 31. The treble clef staff has a more active melody with eighth and sixteenth notes. The bass clef staff continues with a steady eighth-note accompaniment.

32

This system contains measures 32 and 33. The treble clef staff has a whole rest in measure 32, followed by a melodic phrase in measure 33. The bass clef staff maintains the eighth-note accompaniment.

34

This system contains measures 34 and 35. The treble clef staff has a whole rest in measure 34, followed by a melodic phrase in measure 35. The bass clef staff continues with the eighth-note accompaniment.

36

This system contains measures 36 and 37. The treble clef staff has a busy melody with many sixteenth notes. The bass clef staff continues with the eighth-note accompaniment.

38

Measures 38-40 of a musical score in B-flat major (two flats). The right hand features a melody with eighth and sixteenth notes, while the left hand provides a steady eighth-note accompaniment. Measure 39 includes a complex chordal texture in the right hand.

41

Measures 41-43 of the musical score. The right hand continues with a melodic line, incorporating some triplets and sixteenth-note patterns. The left hand maintains the eighth-note accompaniment. Measure 43 shows a more active right hand with sixteenth-note runs.

44

8^{va}-----

Measures 44-47 of the musical score. Measure 44 features a complex chordal texture in the right hand. Measure 45 includes a double bar line and a wavy line in the right hand, indicating a change in texture. Measure 46 has an 8^{va} (octave up) marking with a dashed line extending to the right. Measure 47 concludes the section with a final chord in the right hand and a melodic phrase in the left hand.

