

# Advanced User-friendly

Designs guarantee  
Maximum Comfort with:



## X-1S

### ① Sensitivity Control

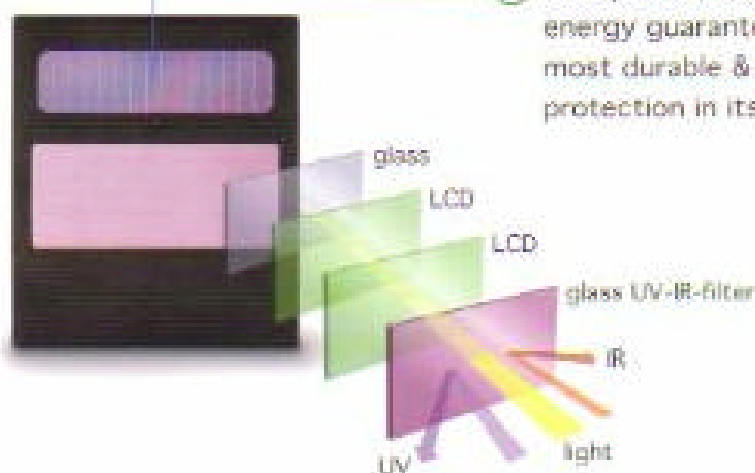
Meet all indoor/outdoor welding needs. Avoid eyes fatigue resulted from frequent lens winking.

### ② Shade Level Adjustment

Meet all needs for Arc/Tig, Mig Welding, Plasma Cutting (Micro plasma cutting) or Grinding.



### ③ Dual powered by Solar & Battery energy guarantee X-mask the most durable & affordable protection in its class.



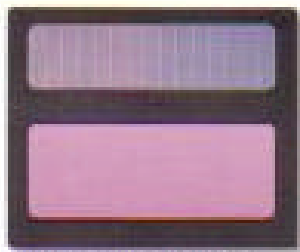
# NUBLOG *A tool for all your welding applications.*



## **Ansi Z87.1 Approved**

The world's leading multi-metallic plating technique,  
12 layers in 1 $\mu$  (micrometer) provides you the best protection ever!

### **X1**



Dimension: 110 x 90mm

#### **Feature**

- 4-Stage Shade Level Adjustment

- Dual LCDS protection to filter any harmful visual lights.
- Advanced multi-metallic plating filter near, far UV and IR radiation.
- Full 2-year Warranty.

### **X-15**



Dimension: 114 x 133mm

#### **Feature**

- Sensitivity fine adjustment
- 4-Stage Shade Level Adjustment

### **Ultra Slim Model**

- Solar Power

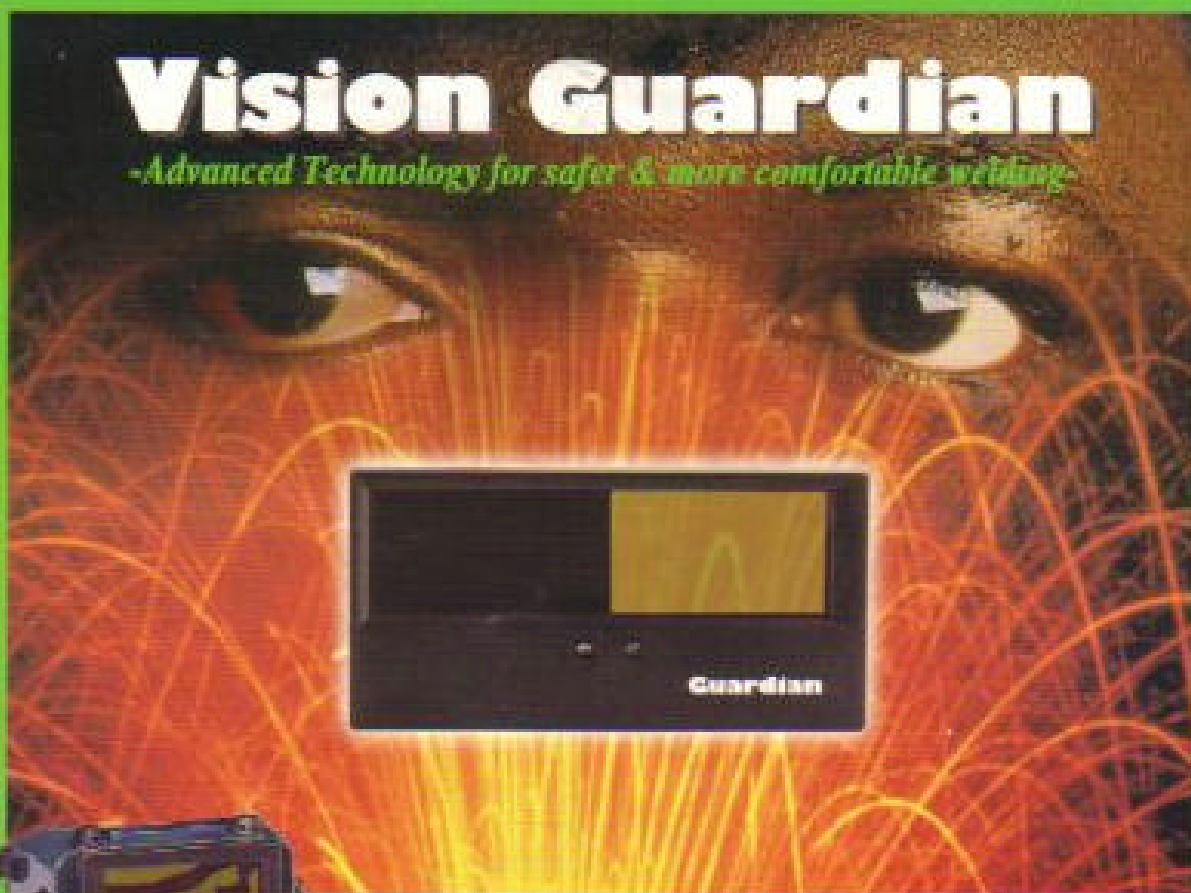
- Helmet-mounted  
Shade level  
Adjustment available



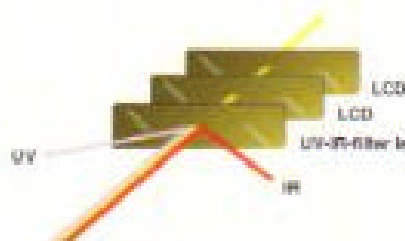
Dimension: 110 x 90mm

# Vision Guardian

*Advanced Technology for safer & more comfortable welding*

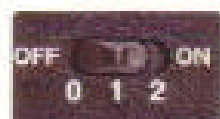


- *ANSI safety regulation approved*
- *Fully automatic & responsive color shade protection*
- *Fit all welding masks with 2" x 4.25" viewing panel*

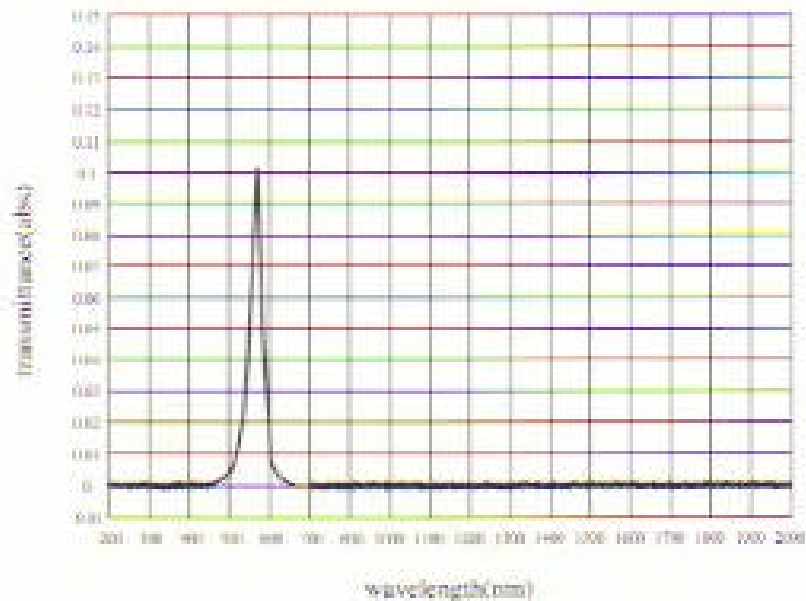


*Progressive multi coating filter lens to protect you from visible or invisible (UV & IR) lights.*

*Comparison between Vision Guardian and traditional lens*



*Maximum comfort with 2 stage adjustment DIN 10 & 12*



### Features:

- ANSI safety approved
- Fully automotive & responsive color shade protection
- Fit all welding masks with 2" x 4.25" viewing panel.
- Progressive Sensor with multi-plated metallic filter lens to protect you from harmful visible or invisible lights.  
the effective range covers:
 

(1) Far-Ultraviolet ray transmissivity (200nm - 315nm)	0.0004% (DIN 12)
(2) Near-Ultraviolet ray transmissivity (315nm - 385nm)	0.00003% (DIN 14)
(3) Infrared ray transmissivity (780nm - 2000nm)	0.01650% (DIN 14)
(4) Blue-Light ray transmissivity (400nm - 1400nm)	0.00073% (DIN 14)
- 2 stage manual adjustment to meet users' need. (DIN 10 & 12)
- Acute sensor activation within 0.2 ms (glare → dim), 1.5 sec (dim → glare)  
Lcd activation within 1.5 ms at 25°C (in proportion to external temperature)

### Specification:

- Battery Replacement: Battery longevity is up to 2000hrs for continuous operation as tested.
- Battery Spec: Lithium 3.0 volt x 2pcs (CR 2032)
- Batter-low indication
- Liquid crystal display  
Operating temperature range: -10°C ~ +60°C
- Dimension: 4.2" (107mm) Lth x 2.1" (53mm) Wth x 0.37" (9.3mm) Thickness
- Weight: 68g

### Advantage:

- Easy & instant installation on yr existing welding mask.
- More convenient to raise your productivity.
- Better welding stablization makes possible precision operation.
- Minimize potential eye injury.