

Soprano

Granada

I. Albeniz (1869-1909)

♩ = 112

p

8

16

24

32 *p* *mf* *pp*

40 *p*

47

54 *rit.*

61 *a tempo*

68

75

3 3

arr. by Lobeschubert

82 *rit.* a tempo

89

96 *sf*

104 *p sf p mf*

112 *p 2 f rit.*

a tempo

121 *p*

129

137

145 *mf*

153 *p³ mf pp*

161

Detailed description of the musical score: The score is written for a soprano part. It starts at measure 82 with a treble clef and a key signature of one sharp (F#). The tempo is marked 'a tempo', and there is a 'rit.' (ritardando) marking at the beginning of the first staff. The first staff (measures 82-88) includes two triplet markings (3). The second staff (measures 89-95) continues the melodic line. The third staff (measures 96-103) features a fortissimo (sf) dynamic at the end. The fourth staff (measures 104-111) shows dynamics of piano (p), sf, p, and mf. The fifth staff (measures 112-120) includes a piano (p) dynamic, a double bar line with a repeat sign, and a forte (f) dynamic with a 'rit.' marking. The sixth staff (measures 121-128) is marked 'a tempo' and starts with a piano (p) dynamic. The seventh staff (measures 129-136) contains several triplet markings (3). The eighth staff (measures 137-144) also features triplet markings (3) and a mezzo-forte (mf) dynamic. The ninth staff (measures 145-152) includes dynamics of p³, mf, and pp. The tenth staff (measures 153-161) concludes the piece with a final cadence at measure 161.

Alto

Granada

I. Albeniz (1869-1909)

$\text{♩} = 112$
p

8

16

24

32 *p* *mf* *pp*

40 *p* 4

50

57 *rit.* *a tempo*

64

71

78

arr. by Lobeschubert

Granada alto p2

85 *rit.* *a tempo* 2

91

98 *sf* *p*

106 *sf* *p* *mf* *p*

114 *f* *rit.* *a tempo* *p*

122

130

138

146 *mf*

154 *p* *mf* *pp*

162

Tenor

Granada

I. Albeniz (1869-1909)

$\text{♩} = 112$

mf

3

3

8

3

3

16

3

23

3

3

3

31

p

mf

39

pp

p

46

53

rit.

61

a tempo

68

75

arr. by Lobeschubert

82 *rit.* a tempo

89

96 *sf*

104 *p sf p mf*

112 *p*

120 *f rit. a tempo p*

128

136

144 *mf*

152 *p mf pp*

160

Bass

Granada

I. Albeniz (1869-1909)



p

8

16

24

32 *p* *mf* *pp*

40 *p*

47

54 *rit.*

61 *a tempo*

68

arr. by Lobeschubert

75



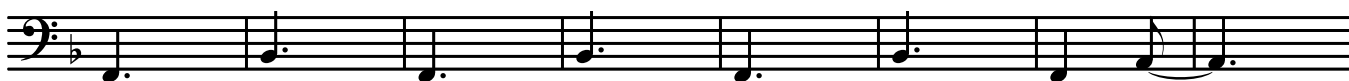
82



88



95



103



111



119



127



135



143



151

159 *pp*