

# Soprano

## Fuga

F. Mendelssohn (1809-1847)

Con moto

7

Alto

10

13

16

19

22

25

28

31

34

arr. Loveschubert

2  
38

## Mendelssohn Fuga Con moto Soprano



# Alto

## Fuga

F. Mendelssohn (1809-1847)

Con moto

2

5

8

11

14

17

20

23

26

29

arr. Loveschubert

32

35

38

41

44

47

50

53

56

59

62

# Tenor

## Fuga

F. Mendelssohn (1809-1847)

Con moto

4

7

11

14

18

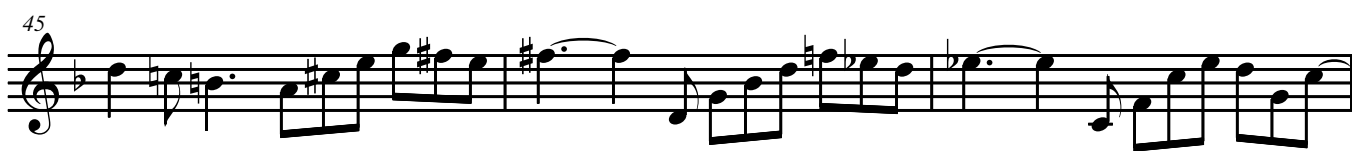
21

24

27

30

arr. Loveschubert



# Bass

## Fuga

F. Mendelssohn (1809-1847)

Con moto

4

Alto

7

10

13

16

19

22

27

Soprano

30

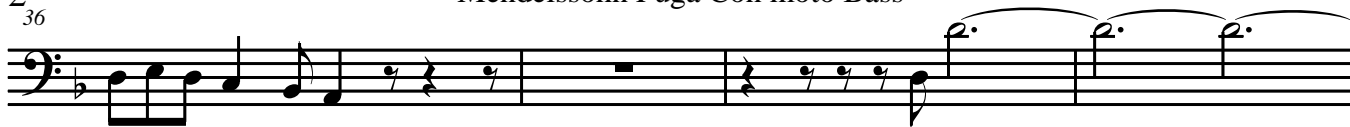
33

The image displays a musical score for a piece titled 'Fuga' by Felix Mendelssohn, arranged by Loveschubert. The score is written for Bass and Soprano voices. The tempo is marked 'Con moto'. The key signature is one flat (B-flat major or D minor). The time signature is 12/8. The score is divided into systems, with measure numbers 7, 10, 13, 16, 19, 22, 27, 30, and 33 indicated at the beginning of each system. The Bass part is written in a bass clef, and the Soprano part is written in a soprano clef. The score includes various musical notations such as notes, rests, and accidentals.

arr. Loveschubert

2  
36

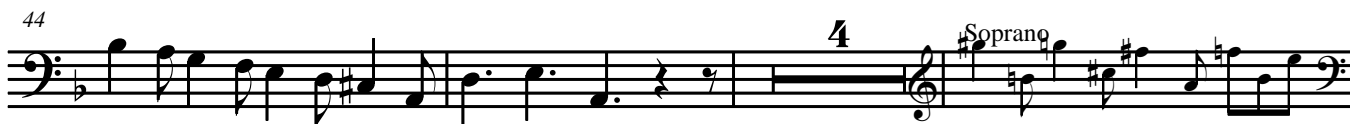
## Mendelssohn Fuga Con moto Bass



40



44



51



54



57



60



63

