

Prelude in D minor BWV 851

J. S. Bach

Alto

Bass

3

5

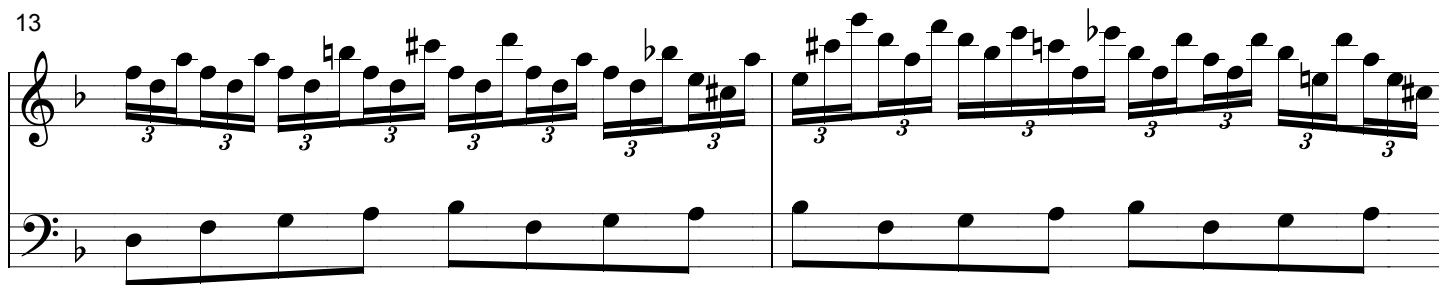
7

9

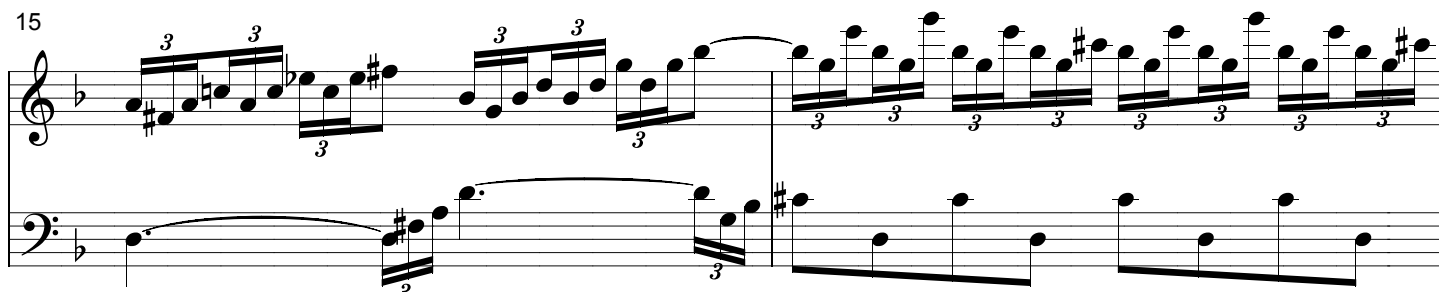
11

The image displays the first eleven measures of the Prelude in D minor, BWV 851, by Johann Sebastian Bach. The score is presented in two systems, each with an Alto staff (treble clef) and a Bass staff (bass clef). The key signature is one flat (B-flat), and the time signature is 4/4. The Alto part is characterized by a continuous melodic line with frequent triplets, while the Bass part provides a steady accompaniment. The measures are numbered 1 through 11 at the beginning of each system. The notation includes various musical symbols such as notes, rests, and triplet markings.

13



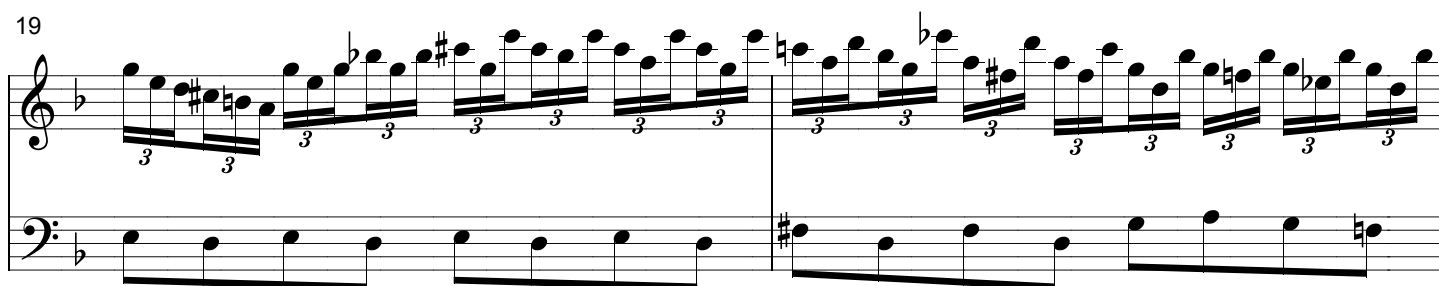
15



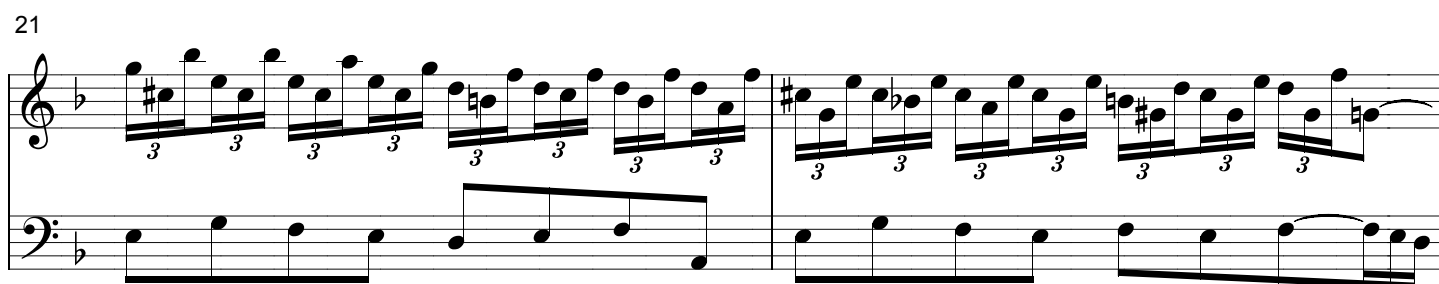
17



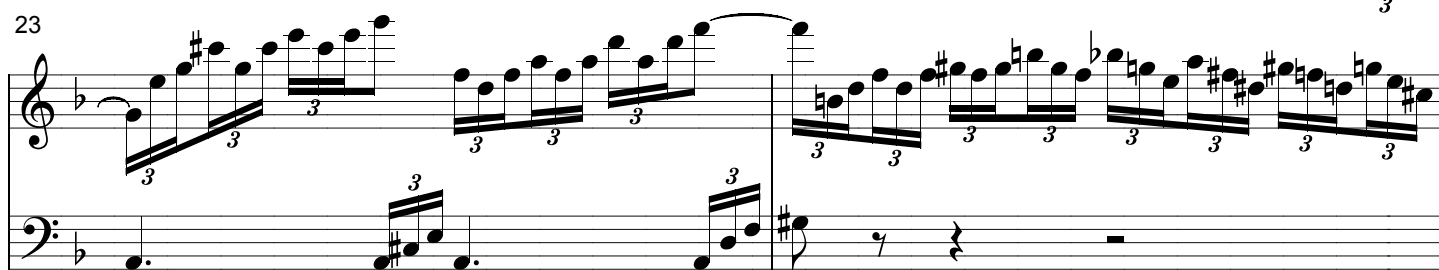
19



21



23



25

