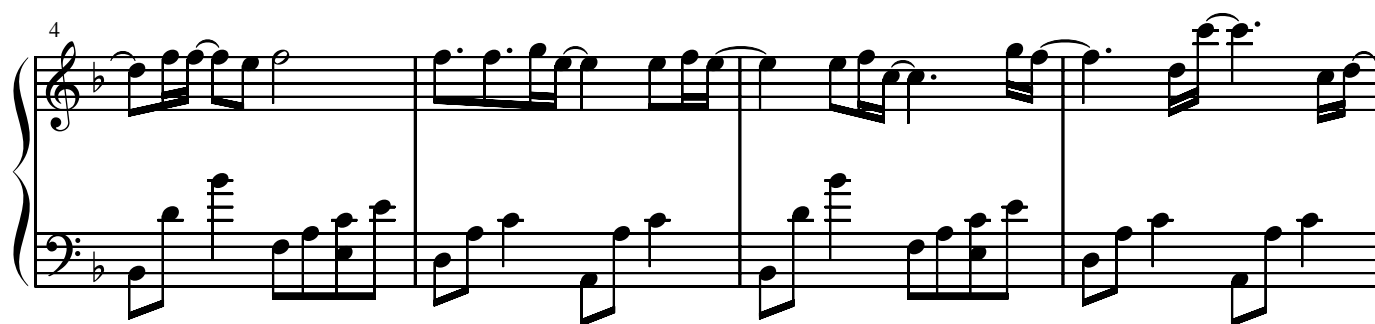


Hello

作曲 dai



16

This system contains measures 16, 17, and 18. The treble clef staff features a melodic line with eighth and sixteenth notes, including a repeat sign in measure 17. The bass clef staff provides a harmonic accompaniment with eighth and sixteenth notes.

19

This system contains measures 19, 20, and 21. The treble clef staff continues the melodic line with eighth and sixteenth notes. The bass clef staff continues the harmonic accompaniment with eighth and sixteenth notes.

22

This system contains measures 22, 23, and 24. The treble clef staff features a melodic line with eighth and sixteenth notes. The bass clef staff provides a harmonic accompaniment with eighth and sixteenth notes.

25

This system contains measures 25, 26, 27, and 28. The treble clef staff features a melodic line with eighth and sixteenth notes, including a repeat sign in measure 27. The bass clef staff provides a harmonic accompaniment with eighth and sixteenth notes.

29

This system contains measures 29, 30, 31, and 32. The treble clef staff features a melodic line with eighth and sixteenth notes, including a repeat sign in measure 31. The bass clef staff provides a harmonic accompaniment with eighth and sixteenth notes.

33

System 33: Treble and bass staves. Treble staff has a melodic line with eighth and sixteenth notes, including a triplet. Bass staff has a rhythmic accompaniment with eighth and sixteenth notes. A fermata is placed over the first bass note.

36

System 36: Treble and bass staves. Treble staff continues the melodic line. Bass staff has a rhythmic accompaniment. A fermata is placed over the first bass note.

39

System 39: Treble and bass staves. Treble staff has a melodic line with eighth and sixteenth notes. Bass staff has a rhythmic accompaniment. A fermata is placed over the first bass note.

42

System 42: Treble and bass staves. Treble staff has a melodic line with eighth and sixteenth notes. Bass staff has a rhythmic accompaniment. A fermata is placed over the first bass note.

46

System 46: Treble and bass staves. Treble staff has a melodic line with eighth and sixteenth notes. Bass staff has a rhythmic accompaniment. A fermata is placed over the first bass note.