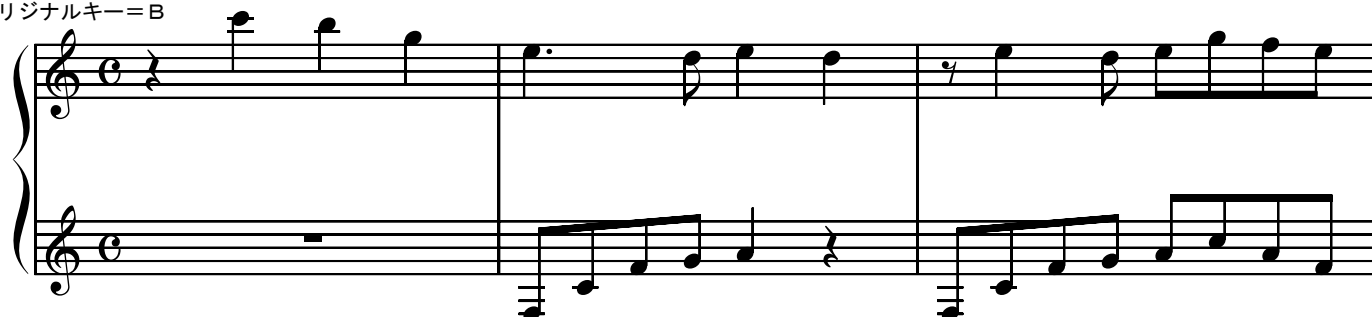


ふたり。ひとり。

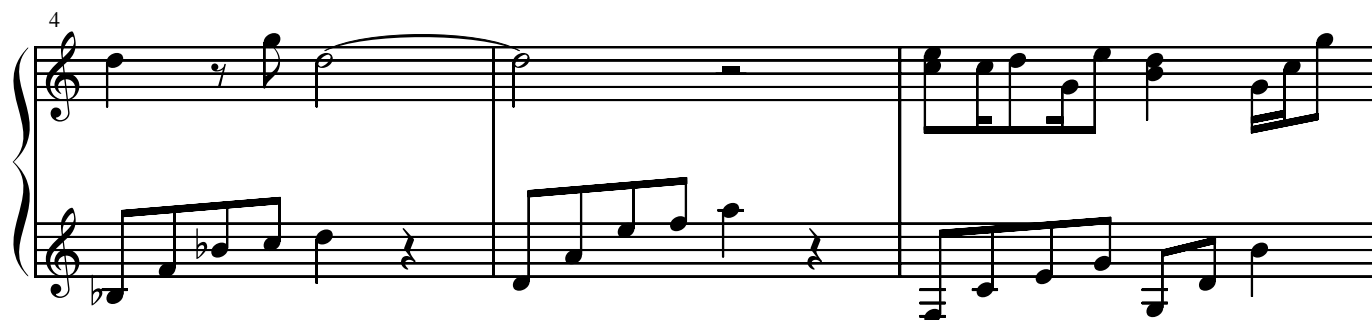
作曲 dai

8va-----

オリジナルキー=B



(8va)-----



(8va)-----



(8va)-----



(gva)-----

12

Measures 12-14: Treble staff has chords and eighth notes; bass staff has a continuous eighth-note line.

15

Measures 15-17: Treble staff has chords and eighth notes; bass staff has a continuous eighth-note line.

18

Measures 18-20: Treble staff has chords and eighth notes; bass staff has a continuous eighth-note line.

20

Measures 21-22: Treble staff has chords and eighth notes; bass staff has a continuous eighth-note line.

22

Measures 23-25: Treble staff has chords and eighth notes; bass staff has a continuous eighth-note line.

rit.

a tempo

25

Measures 25-27. Treble staff: Measure 25 has a whole rest followed by a quarter note G4, then eighth notes A4, B4, C5, B4, A4, G4. Measure 26 has a quarter note G4, then eighth notes A4, B4, C5, B4, A4, G4. Measure 27 has a quarter note G4, then eighth notes A4, B4, C5, B4, A4, G4. Bass staff: Measure 25 has a whole rest followed by a quarter note F3, then eighth notes G3, A3, B3, C4, B3, A3, G3. Measure 26 has a quarter note F3, then eighth notes G3, A3, B3, C4, B3, A3, G3. Measure 27 has a quarter note F3, then eighth notes G3, A3, B3, C4, B3, A3, G3.

28

Measures 28-30. Treble staff: Measure 28 has a whole rest followed by a quarter note G4, then eighth notes A4, B4, C5, B4, A4, G4. Measure 29 has a quarter note G4, then eighth notes A4, B4, C5, B4, A4, G4. Measure 30 has a quarter note G4, then eighth notes A4, B4, C5, B4, A4, G4. Bass staff: Measure 28 has a whole rest followed by a quarter note F3, then eighth notes G3, A3, B3, C4, B3, A3, G3. Measure 29 has a quarter note F3, then eighth notes G3, A3, B3, C4, B3, A3, G3. Measure 30 has a quarter note F3, then eighth notes G3, A3, B3, C4, B3, A3, G3.

31

Measures 31-33. Treble staff: Measure 31 has a whole rest followed by a quarter note G4, then eighth notes A4, B4, C5, B4, A4, G4. Measure 32 has a quarter note G4, then eighth notes A4, B4, C5, B4, A4, G4. Measure 33 has a quarter note G4, then eighth notes A4, B4, C5, B4, A4, G4. Bass staff: Measure 31 has a whole rest followed by a quarter note F3, then eighth notes G3, A3, B3, C4, B3, A3, G3. Measure 32 has a quarter note F3, then eighth notes G3, A3, B3, C4, B3, A3, G3. Measure 33 has a quarter note F3, then eighth notes G3, A3, B3, C4, B3, A3, G3.

34

Measures 34-36. Treble staff: Measure 34 has a whole rest followed by a quarter note G4, then eighth notes A4, B4, C5, B4, A4, G4. Measure 35 has a quarter note G4, then eighth notes A4, B4, C5, B4, A4, G4. Measure 36 has a quarter note G4, then eighth notes A4, B4, C5, B4, A4, G4. Bass staff: Measure 34 has a whole rest followed by a quarter note F3, then eighth notes G3, A3, B3, C4, B3, A3, G3. Measure 35 has a quarter note F3, then eighth notes G3, A3, B3, C4, B3, A3, G3. Measure 36 has a quarter note F3, then eighth notes G3, A3, B3, C4, B3, A3, G3.

37

Measures 37-39. Treble staff: Measure 37 has a whole rest followed by a quarter note G4, then eighth notes A4, B4, C5, B4, A4, G4. Measure 38 has a quarter note G4, then eighth notes A4, B4, C5, B4, A4, G4. Measure 39 has a quarter note G4, then eighth notes A4, B4, C5, B4, A4, G4. Bass staff: Measure 37 has a whole rest followed by a quarter note F3, then eighth notes G3, A3, B3, C4, B3, A3, G3. Measure 38 has a quarter note F3, then eighth notes G3, A3, B3, C4, B3, A3, G3. Measure 39 has a quarter note F3, then eighth notes G3, A3, B3, C4, B3, A3, G3.

39

Measures 39-40. Treble clef: Measure 39 has a G4 chord, an eighth-note G4-A4, and a quarter-note G4. Measure 40 has a G4 chord, a quarter-note G4, and a half-note G4. Bass clef: Measure 39 has an eighth-note line from C3 to G3. Measure 40 has an eighth-note line from G3 to C4.

41

gva-----

Measures 41-42. Treble clef: Measure 41 has an eighth-note line from G4 to C5 and a G4 chord. Measure 42 has a quarter-note G4, a quarter-note G4, and a half-note G4. Bass clef: Measure 41 has an eighth-note line from C3 to G3. Measure 42 has an eighth-note line from G3 to C4.

43

(gva)-----

Measures 43-44. Treble clef: Measure 43 has an eighth-note line from G4 to C5 and a G4 chord. Measure 44 has a quarter-note G4, a quarter-note G4, and a half-note G4. Bass clef: Measure 43 has an eighth-note line from C3 to G3. Measure 44 has an eighth-note line from G3 to C4.

45

Measures 45-46. Treble clef: Measure 45 has an eighth-note line from G4 to C5 and a G4 chord. Measure 46 has a quarter-note G4, a quarter-note G4, and a half-note G4. Bass clef: Measure 45 has an eighth-note line from C3 to G3. Measure 46 has an eighth-note line from G3 to C4.

47

rit.

Measures 47-48. Treble clef: Measure 47 has an eighth-note line from G4 to C5 and a G4 chord. Measure 48 has a quarter-note G4, a quarter-note G4, and a half-note G4. Bass clef: Measure 47 has an eighth-note line from C3 to G3. Measure 48 has an eighth-note line from G3 to C4.