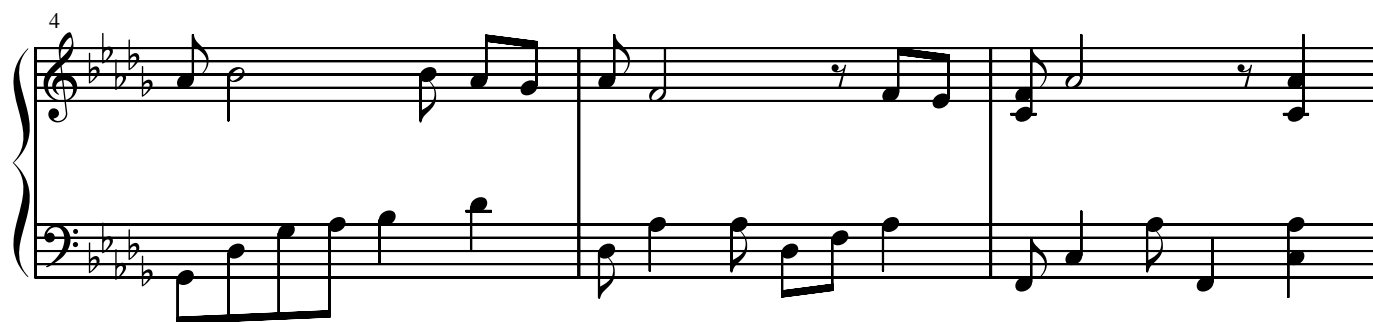


想い

作曲 dai



13

Musical score for 'The Rose Tree' in 3/4 time, key of B-flat major. The score consists of two staves: a treble staff and a bass staff. The treble staff begins with a treble clef and a key signature of two flats (B-flat major). The bass staff begins with a bass clef and a key signature of two flats (B-flat major). The melody is written in the treble staff, and the accompaniment is written in the bass staff. The score is divided into three measures by vertical bar lines. The first measure contains a treble staff with a melody starting on G4 and a bass staff with a melody starting on G2. The second measure contains a treble staff with a melody starting on A4 and a bass staff with a melody starting on A2. The third measure contains a treble staff with a melody starting on B4 and a bass staff with a melody starting on B2. The score ends with a double bar line.

16

Handwritten musical score for 'The Rose Tree'. The score is written on two staves, Treble and Bass clef, in 3/4 time. The key signature has three flats (B-flat, E-flat, A-flat). The melody is in the Treble clef, and the bass line is in the Bass clef. The score consists of three measures. The first measure has a treble staff with a whole note chord (F4, A4, C5) and a bass staff with a quarter note G3, followed by a quarter rest. The second measure has a treble staff with a quarter note G4, followed by an eighth note A4 and an eighth note B4 beamed together, then a quarter rest. The bass staff has a quarter note G3, followed by an eighth note A3 and an eighth note B3 beamed together, then a quarter rest. The third measure has a treble staff with a quarter note G4, followed by an eighth note A4 and an eighth note B4 beamed together, then a quarter rest. The bass staff has a quarter note G3, followed by an eighth note A3 and an eighth note B3 beamed together, then a quarter rest.

19

Example 19: Musical score for piano accompaniment, measures 19-22. The score is in 4/4 time, key of B-flat major, and consists of 19 measures. The piano part features a melodic line in the right hand and a harmonic line in the left hand, with various chords and intervals.

[illegible]

24

Example 10-10 continues with measures 24-26. The melody in the right hand features a sequence of eighth notes and quarter notes, while the left hand provides a steady accompaniment of eighth notes.

27

System 1, measures 27-29. The key signature has four flats (B-flat, E-flat, A-flat, D-flat). Measure 27: Treble clef has a dotted quarter note G4, an eighth note A4, and a quarter note B4. Bass clef has a dotted quarter note G3, an eighth note A3, and a quarter note B3. Measure 28: Treble clef has a whole rest. Bass clef has a quarter note C4, a quarter note D4, and a quarter note E4. Measure 29: Treble clef has a quarter note F4, a quarter note G4, and a quarter note A4. Bass clef has a whole note B3.

30

System 2, measures 30-32. Measure 30: Treble clef has a quarter note B4, a quarter note C5, and a quarter note D5. Bass clef has a whole note B3. Measure 31: Treble clef has a quarter note E5, a quarter note F5, and a quarter note G5. Bass clef has a quarter note C4, a quarter note D4, and a quarter note E4. Measure 32: Treble clef has a quarter note A5, a quarter note B5, and a quarter note C6. Bass clef has a whole note B3.

33

System 3, measures 33-35. Measure 33: Treble clef has a quarter note D5, a quarter note E5, and a quarter note F5. Bass clef has a quarter note C4, a quarter note D4, and a quarter note E4. Measure 34: Treble clef has a quarter note G5, a quarter note A5, and a quarter note B5. Bass clef has a quarter note F4, a quarter note G4, and a quarter note A4. Measure 35: Treble clef has a quarter note C6, a quarter note D6, and a quarter note E6. Bass clef has a quarter note B4, a quarter note C5, and a quarter note D5.

36

System 4, measures 36-38. Measure 36: Treble clef has a quarter note F5, a quarter note G5, and a quarter note A5. Bass clef has a quarter note E4, a quarter note F4, and a quarter note G4. Measure 37: Treble clef has a quarter note B5, a quarter note C6, and a quarter note D6. Bass clef has a quarter note A4, a quarter note B4, and a quarter note C5. Measure 38: Treble clef has a quarter note E6, a quarter note F6, and a quarter note G6. Bass clef has a quarter note D5, a quarter note E5, and a quarter note F5.

39

System 5, measures 39-41. Measure 39: Treble clef has a quarter note A5, a quarter note B5, and a quarter note C6. Bass clef has a quarter note F4, a quarter note G4, and a quarter note A4. Measure 40: Treble clef has a quarter note D6, a quarter note E6, and a quarter note F6. Bass clef has a quarter note G4, a quarter note A4, and a quarter note B4. Measure 41: Treble clef has a quarter note G6, a quarter note A6, and a quarter note B6. Bass clef has a quarter note A4, a quarter note B4, and a quarter note C5.

42

System 1, measures 42-44. The key signature is B-flat major (two flats). The melody in the right hand features eighth and quarter notes with occasional rests. The bass line consists of a steady eighth-note accompaniment.

45

System 2, measures 45-47. The melody continues with eighth and quarter notes. The bass line maintains the eighth-note accompaniment pattern.

48

System 3, measures 48-50. Measure 48 begins with a whole rest in the right hand. The melody starts in measure 49 with eighth notes. The bass line features a mix of eighth notes and chords.

51

System 4, measures 51-53. The melody continues with eighth notes. The bass line features a mix of eighth notes and chords.

54

System 5, measures 54-56. The melody continues with eighth notes. The bass line features a mix of eighth notes and chords. The system concludes with a double bar line.