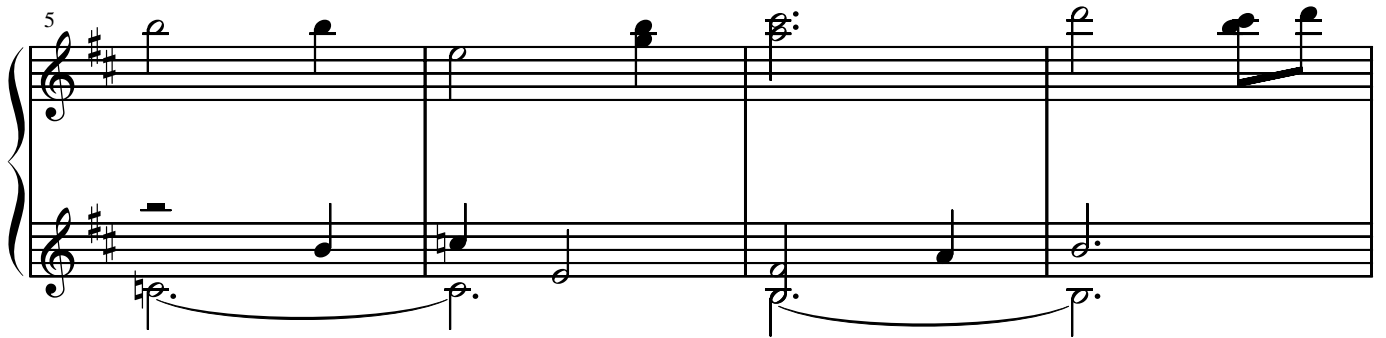
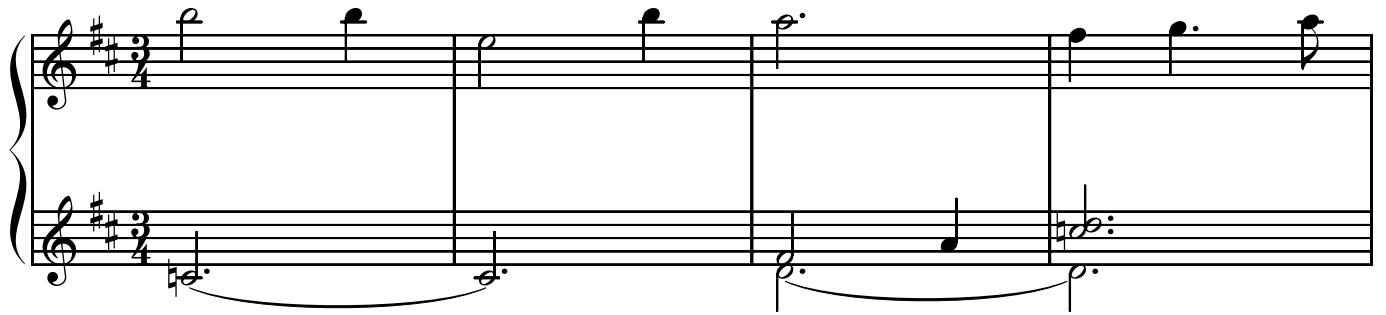
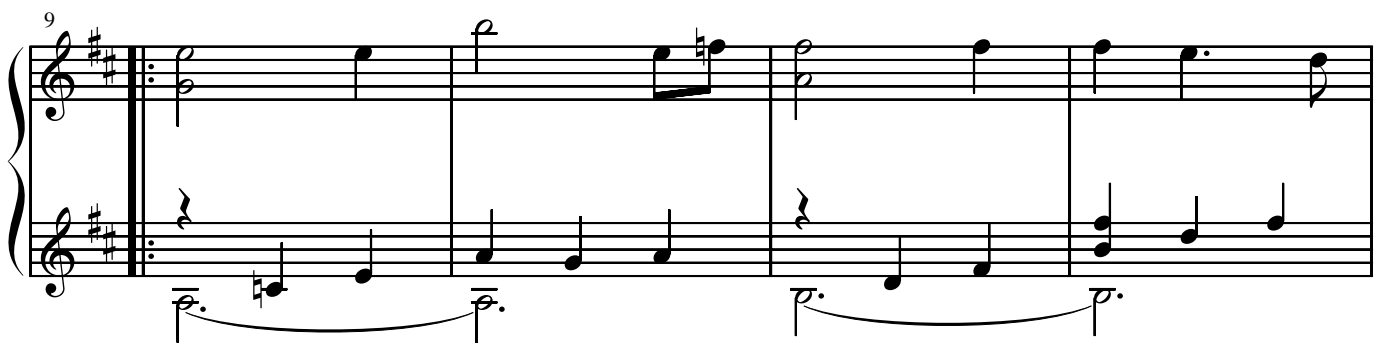


years

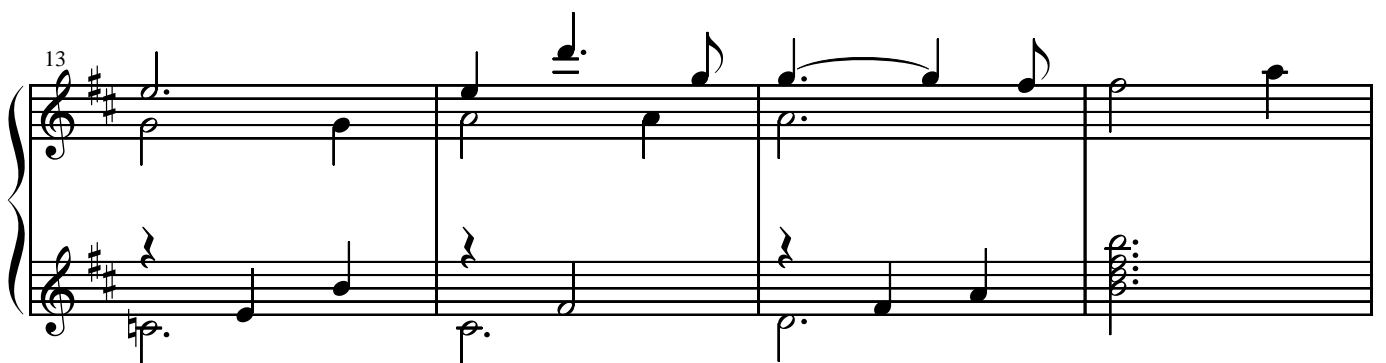
作曲 dai



gva-----



(gva)-----



(gva)-----

17

17

(gva)-----

21

21

(gva)-----

25

25

(gva)-----

29

29

33

33

36

Handwritten musical score for 'The Rose Tree'. The score is written on two staves, both in treble clef with a key signature of two sharps (F# and C#). The music is in 3/4 time. The first staff contains a melody with notes and rests, while the second staff provides a harmonic accompaniment with chords and moving lines. The score is divided into measures by vertical bar lines.

39

Handwritten musical score for measures 39-42 of 'The Rose Tree'. The score is written on two staves, both in treble clef with a key signature of two sharps (F# and C#). The melody in the upper staff consists of quarter and eighth notes, with some measures containing beamed sixteenth notes. The bass line in the lower staff is more active, featuring eighth and sixteenth notes, and includes a brief excursion into the bass clef in measure 41. The piece concludes with a final double bar line in measure 42.

42

Musical score for 'The Rose Tree' in G major, 2/4 time. The score consists of two staves: a treble staff and a bass staff. The treble staff begins with a treble clef and a key signature of two sharps (F# and C#). The bass staff begins with a bass clef and the same key signature. The melody in the treble staff is: G4 (quarter), A4 (quarter), B4 (quarter), A4-G4 (beamed eighth notes), F#4 (quarter), E4 (quarter), D4 (half). The bass staff accompaniment is: G3 (quarter), A3 (quarter), B3 (quarter), A3-G3 (beamed eighth notes), F#3 (quarter), E3 (quarter), D3 (half). The piece concludes with a final G4 in the treble and a G3 in the bass.

45

Musical score for 'The Rose Tree' (Measures 45-47). The score is written for piano (p) and features a treble and bass staff. The key signature is D major (two sharps). The melody in the treble staff consists of quarter notes: D5, E5, F#5, G5, A5, B5, C6, D6. The bass staff provides a harmonic accompaniment with eighth and quarter notes. Measure 45: Treble (D5), Bass (D4, E4, F#4). Measure 46: Treble (E5), Bass (G4, A4, B4). Measure 47: Treble (F#5), Bass (C5, D5, E5). The piece concludes with a final D5 in the treble and a D4 in the bass.

48

Musical score for 'The Rose Tree' in G major, 2/4 time. The score consists of two staves: a treble staff and a bass staff. The treble staff begins with a treble clef and a key signature of two sharps (F# and C#). The bass staff begins with a bass clef and a key signature of two sharps (F# and C#). The melody is written in the treble staff, and the accompaniment is written in the bass staff. The score is divided into three measures. The first measure contains a quarter note G4, a quarter note A4, and a quarter note B4. The second measure contains a quarter note C5, a quarter note B4, and a quarter note A4. The third measure contains a quarter note G4, a quarter note F#4, and a quarter note E4. The bass staff accompaniment consists of a series of eighth notes and quarter notes, providing a rhythmic foundation for the melody.

51

Measures 51-54. Treble staff: measures 51-52 have a half note F#4 and a dotted half note A4; measures 53-54 have a half note F#4 and a dotted half note A4. Bass staff: measures 51-52 have a half note D3 and a dotted half note F#3; measures 53-54 have a half note D3 and a dotted half note F#3.

55

Measures 55-58. Treble staff: measures 55-56 have a half note F#4 and a dotted half note A4; measures 57-58 have a half note F#4 and a dotted half note A4. Bass staff: measures 55-56 have a half note D3 and a dotted half note F#3; measures 57-58 have a half note D3 and a dotted half note F#3.

59

Measures 59-62. Treble staff: measures 59-60 have a half note F#4 and a dotted half note A4; measures 61-62 have a half note F#4 and a dotted half note A4. Bass staff: measures 59-60 have a half note D3 and a dotted half note F#3; measures 61-62 have a half note D3 and a dotted half note F#3.

63

to Φ

rit.

a tempo

Measures 63-66. Treble staff: measures 63-64 have a half note F#4 and a dotted half note A4; measures 65-66 have a half note F#4 and a dotted half note A4. Bass staff: measures 63-64 have a half note D3 and a dotted half note F#3; measures 65-66 have a half note D3 and a dotted half note F#3. The system includes tempo markings: *to* Φ above measure 63, *rit.* above measure 64, and *a tempo* above measure 65.

67

Measures 67-70. Treble staff: measures 67-68 have a half note F#4 and a dotted half note A4; measures 69-70 have a half note F#4 and a dotted half note A4. Bass staff: measures 67-68 have a half note D3 and a dotted half note F#3; measures 69-70 have a half note D3 and a dotted half note F#3.

71

75

79

83

87